

MAGNIFIQUE

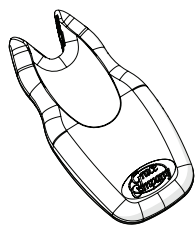
Instructions

Use

The Magnifique magnifying glass enlarges your view of the sewing area, making it easier to thread your needle and see stitch details.

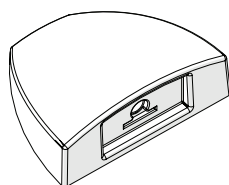
Included Parts and Tools

Magnifier Handle



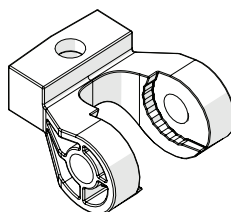
ACC-09-15460

Adhesive Mount Assembly



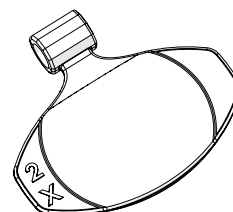
ACC-09-16158

Right Angle Magnifier Mount



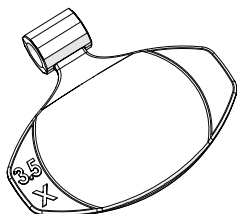
ACC-05-14234

2X Magnifying Glass



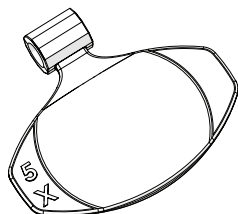
ACC-09-15455

3.5X Magnifying Glass



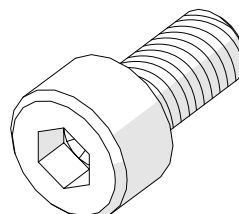
ACC-09-15456

5X Magnifying Glass



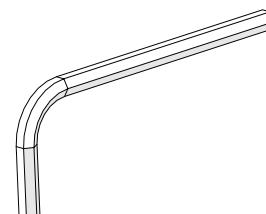
ACC-09-15457

SHCS M4 x 8 mm



HDW-03-12208

Allen Wrench 3 mm



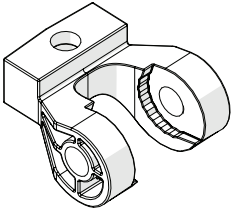
HDW-03-10166

Magnifique Magnifying Glass

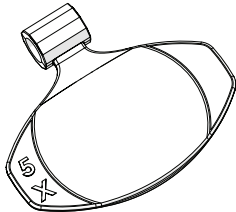
Install on a Q'nique 21 Series Machine

Parts and Tools Needed

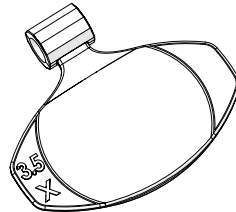
Right Angle Mount



5X Magnifying Glass



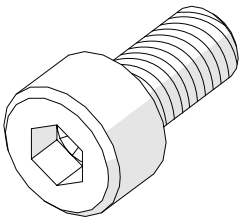
3.5X Magnifying Glass



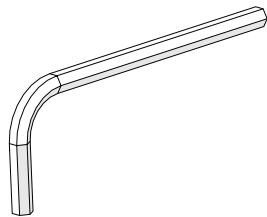
2X Magnifying Glass



SHCS M4 x 8 mm



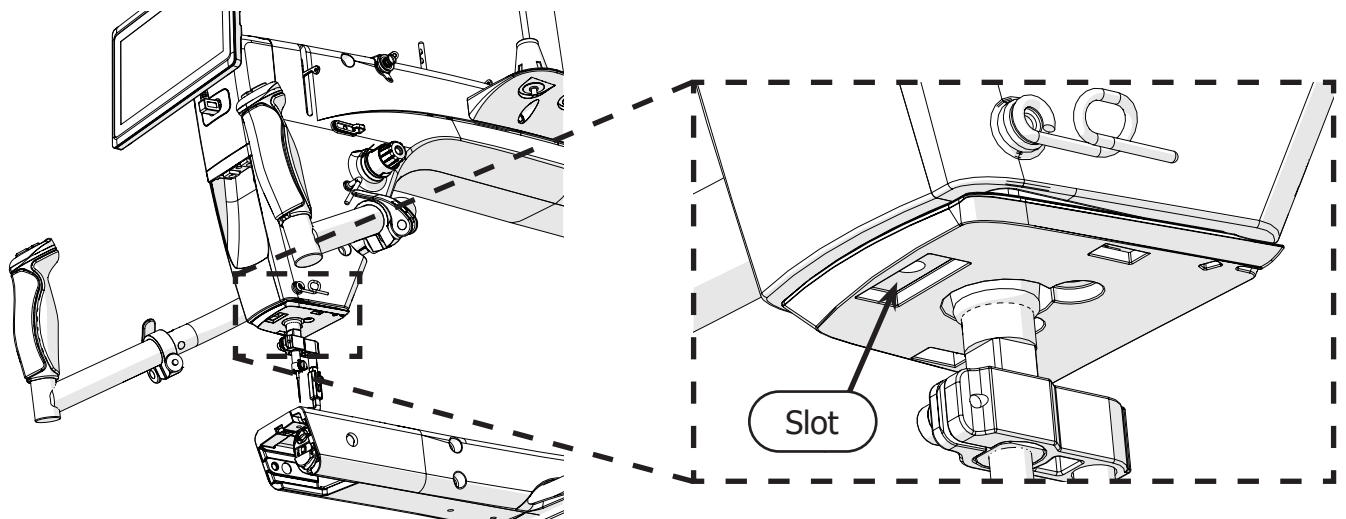
Allen Wrench 3 mm



Instructions

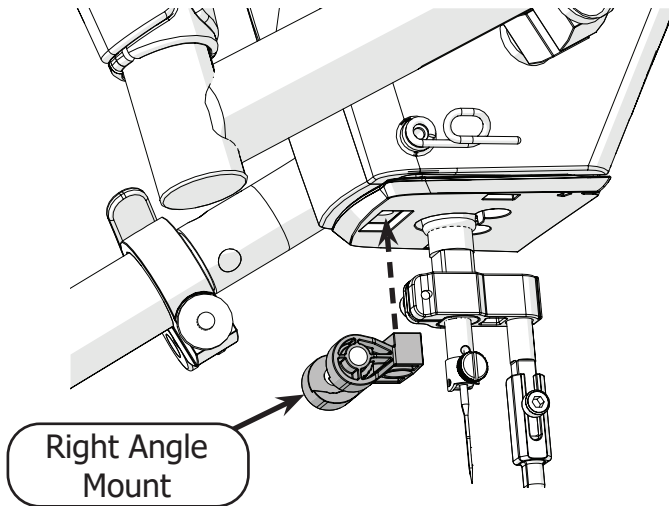
Most Q'nique 21 series machines have a slot just above the needle to mount the magnifying glass. Check your machine to see if it has this slot.

If it does, proceed to step 1 on the following page to install the mount to your machine. If it does not, skip to page 4 for instructions to attach the magnifying glass using the adhesive mount.

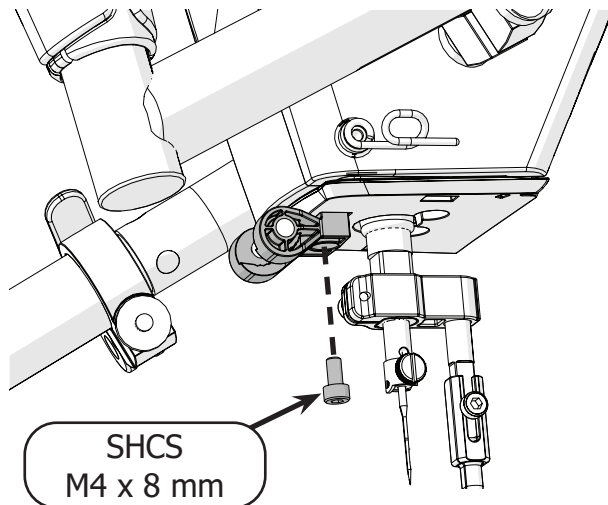


Magnifique Magnifying Glass

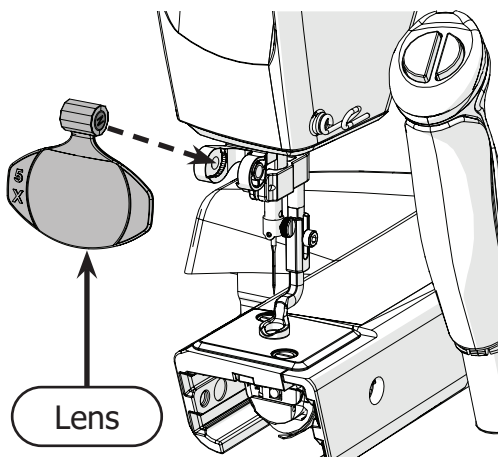
- 1 Slide the **right angle mount** into the slot.



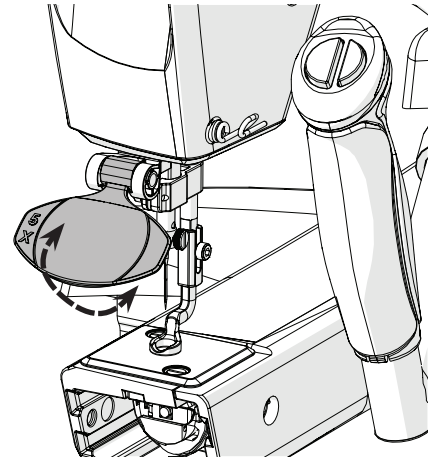
- 2 Secure in place with the **M4 x 8 mm SHCS** and the 3 mm Allen wrench.



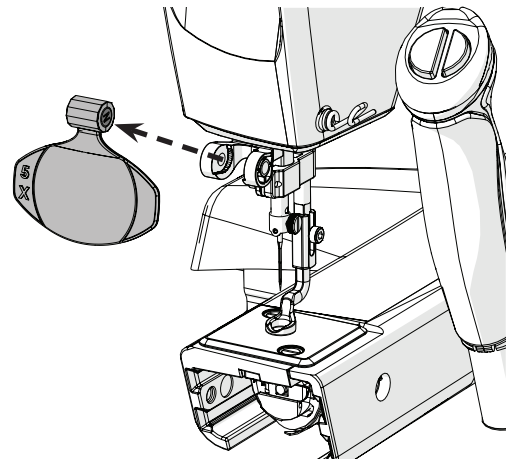
- 3 Select the **magnifying lens** you want to use and slide it into place in the right angle mount. The magnets will hold it in place.



- 4 Adjust the magnifying lens by rotating it until it gives you a clear view of the needle area.



- 5 You can change the lens by lifting the lens out of the right angle mount and replacing it with a different magnification.

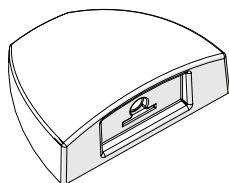


Magnifique Magnifying Glass

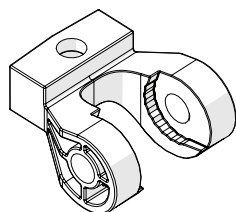
Install With the Adhesive Mount

Parts and Tools Needed

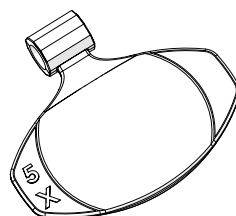
Adhesive Mount Assembly



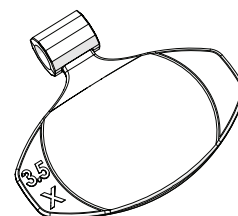
Right Angle Magnifier Mount



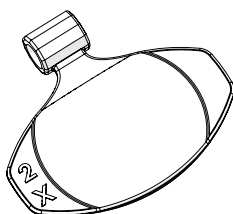
5X Magnifying Glass



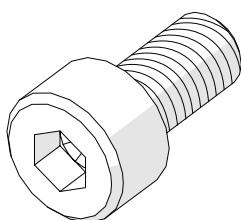
3.5X Magnifying Glass



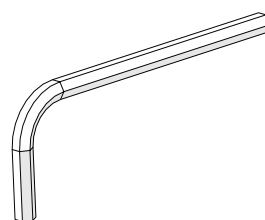
2X Magnifying Glass



SHCS M4 x 8 mm



Allen Wrench 3 mm

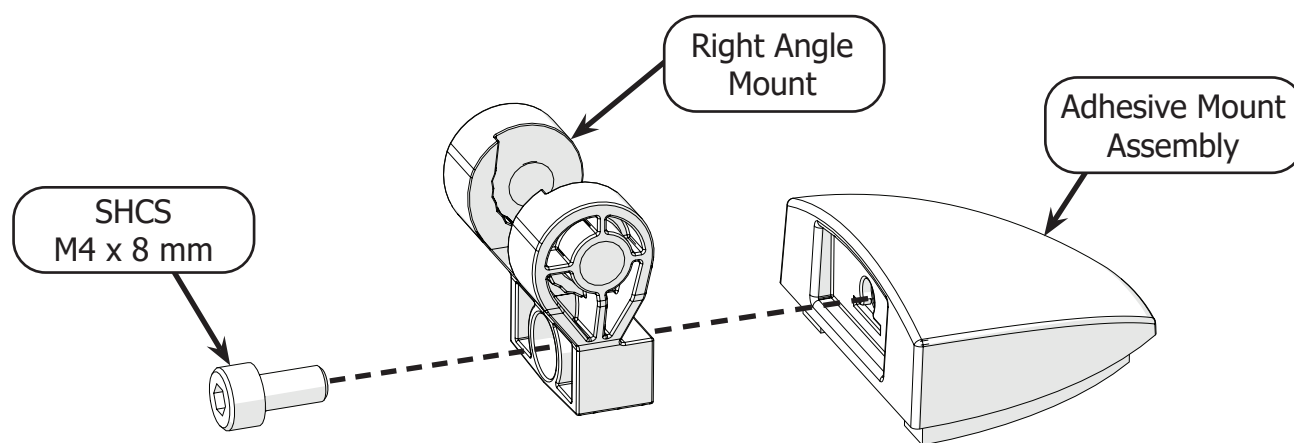


Instructions

If you are using a machine that does not have a slot to install the magnifying glass directly to the machine, such as a home sewing machine, you can attach it using the adhesive pad on the adhesive mount assembly.

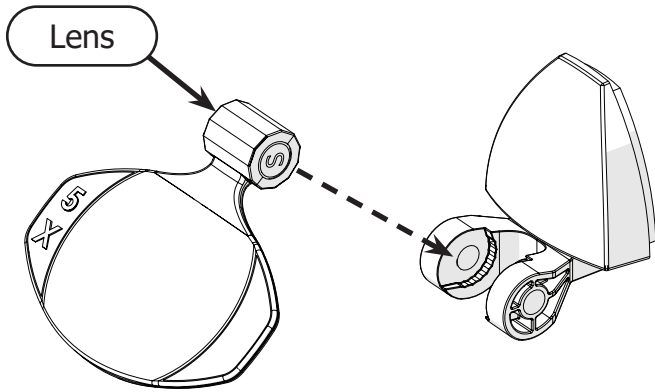
Take the following steps to attach the magnifying glass to your machine with the adhesive mount assembly:

- 1 Use the 3 mm Allen wrench and the **M4 x 8 mm SHCS** to attach the **right angle mount** to the **adhesive mount assembly**.



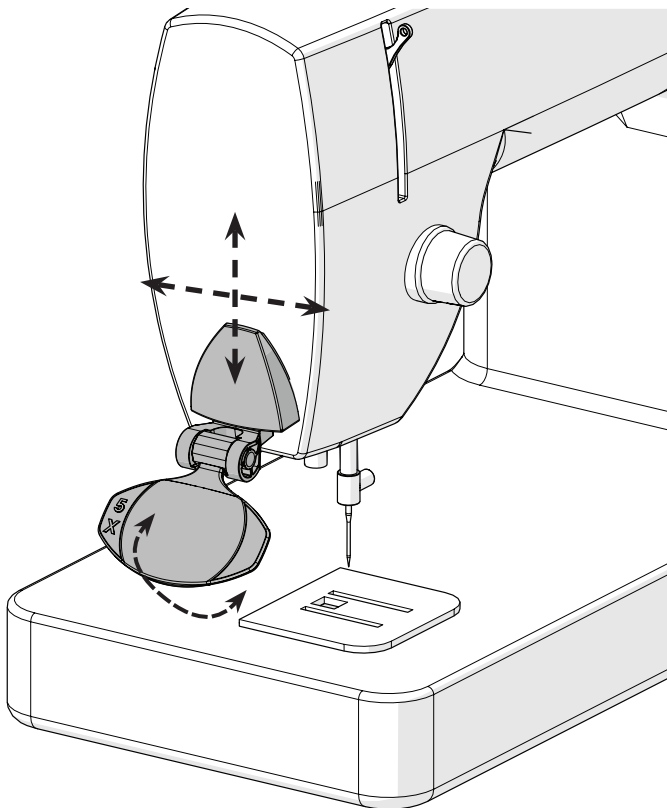
Magnifique Magnifying Glass

- 2 Select the magnifying **lens** you want to use and slide it into place in the right angle mount. The magnets will hold the lens in place.

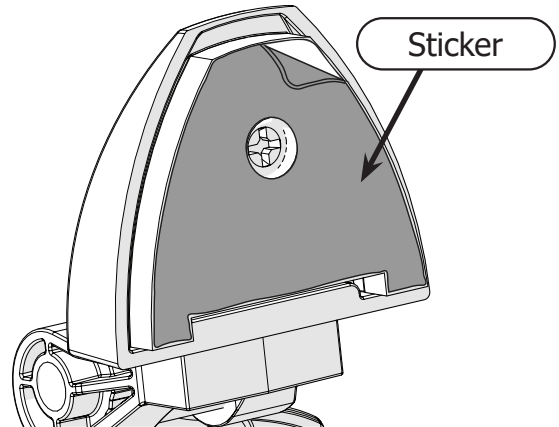


- 3 Before removing the adhesive sticker, test locations on the front of your machine to find one that gives you a good angle to focus on the needle area.

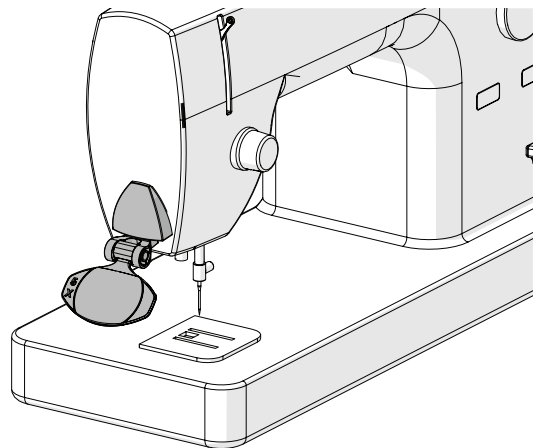
You can also rotate the lens to change the angle.



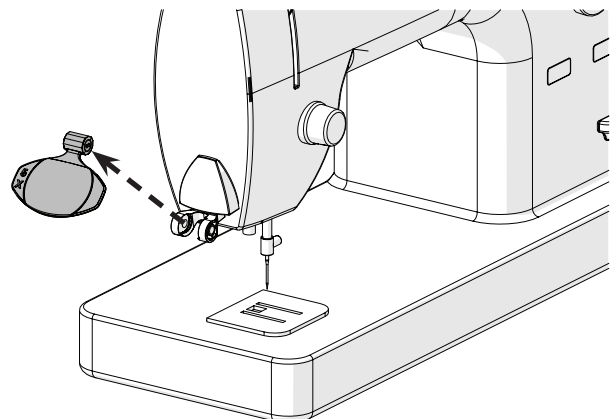
- 4 Once you have found the best location and angle, clean it well and let it dry. Then remove the **sticker** from the back of the adhesive mount assembly.



- 5 Place the adhesive mount assembly in the location you selected on your machine. Push for several seconds to make sure it sticks.



- 6 You can change the lens by lifting the lens out of the right angle mount and replacing it with a different magnification.

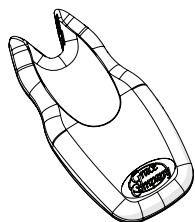


Magnifique Magnifying Glass

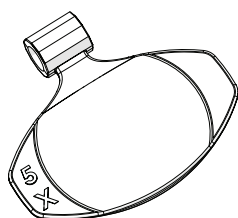
Use the Magnifying Glass Handle

Parts and Tools Needed

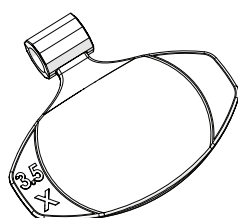
Magnifier Handle



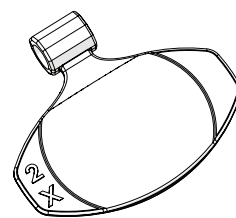
5X Magnifying Glass



3.5X Magnifying Glass



2X Magnifying Glass

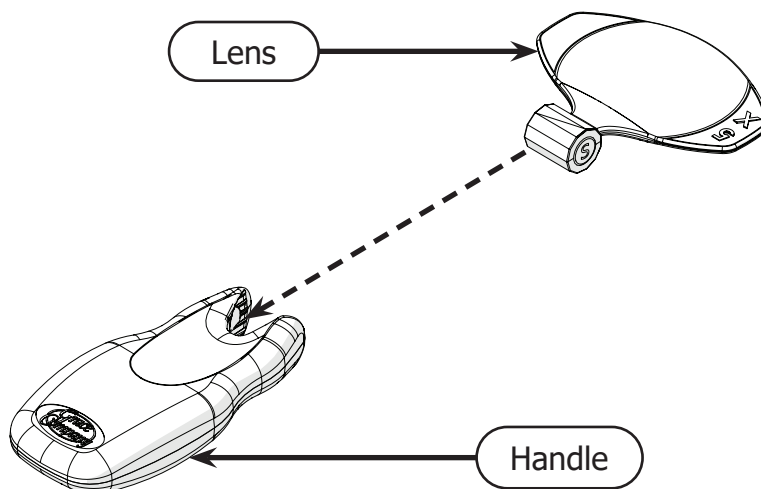


Instructions

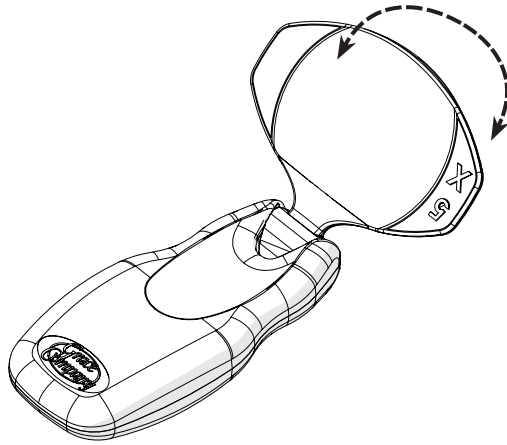
You can also use these lenses with the included handle.

Take the following steps to attach the lenses to the handle and use them together.

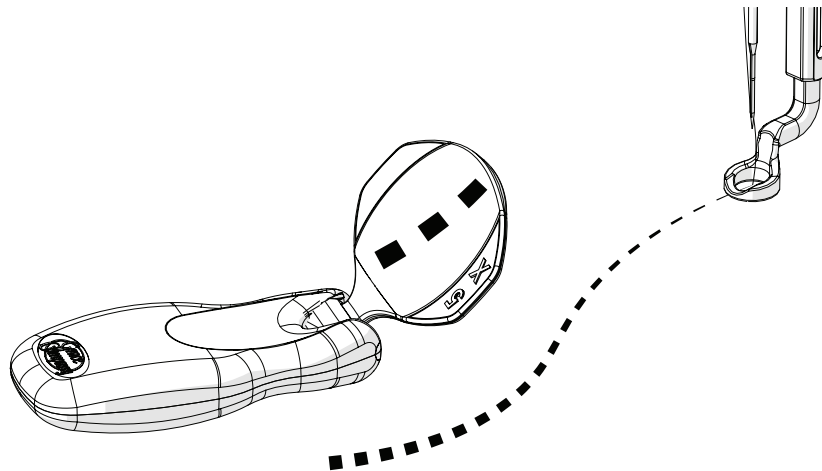
- 1 Select the **magnifying lens** you want to use and slide it into the open end of the **handle**. The magnets will hold the lens in place.



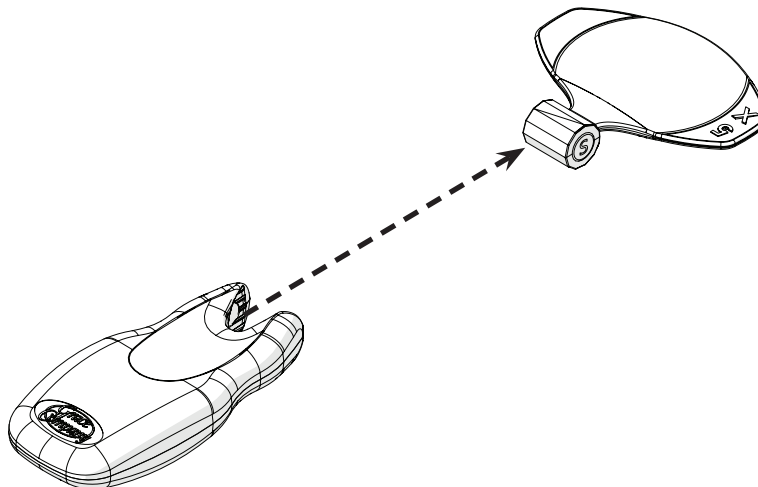
- 2 You can adjust the lens by rotating it until it is at your preferred angle.



- 3 Use the magnifying glass to get a better view of your stitches, making sure the machine has proper tension and the stitch length is correct.



- 4 You can change the lens by pulling the lens out of the handle and replacing it with a different magnification.



The Grace Company
Phone: 1-800-264-0644
www.graceframe.com

