

Software Registration

To complete the Software Registration online, your tablet needs to be connected to the internet. If needed, see page 17 for instructions on how to connect to the internet.

- 1 The Software Registration Form loads, prompting you to register your software now. Tap **Yes**.

Software Registration Form

Register Your Software Now
Time remaining to register: 30:12:12:23 (d:h:m:s)

You must register your software before the above time counts down to zero. If you fail to register within this time period, the software will revert to Demonstration mode.

We encourage you to do this as soon as possible. The registration process only takes a few minutes.

(If you choose to register later, you can still run your fully functional software until the time expires.)

Do you want to register now?

Version 5.05.55 Registration Support 800-264-0644

No Yes

- 2 The Get Product Information screen displays. Choose **Next**.

Software Registration Form

Get Product Information

1. Product Key	Code	Product Description
QMO 7MU3W FGRTE KA238	QCT	Quilter's Creative Touch

Get Product Key From Thumb Drive

If there are no Product Keys listed above, tap on the 'Get Product Key From Thumb Drive' button and follow the instructions to get your Product Key.

Click 'Next' when you have finished.

Version 5.05.55 Registration Support 800-264-0644

Previous Next

- 3 The Device Name and Device ID will populate in the Software Registration Form. Tap **Next**.

Device Information

2. Device Name:

3. Device ID:

Now let's get a little information about this device your software is running on.

The 'Device Name' describes this computer (or tablet). If you ever need to call us for technical support, you can easily identify this device for us by its name. We provide the default name, however, you can re-name it to something else if you wish.

The 'Device ID' was created for registration purposes.

Click 'Next' to continue..

Version *5.05.55* Customer Service: 800-264-0644

- 4 Fill out the fields on the Get Email Information window. Tap **Next**.

Get Email Information

4. First Name:

5. Last Name:

6. Email Address:

7. Security Question:

8. Answer:

9. Mobile Phone*

* Mobile Number Only - We use this to simplify the verification process.

Carefully and accurately enter your name and email address. Select and answer a security question, then enter your mobile phone number if you have one.

Click 'Next' to continue..
(which will open up a window for you to review, then submit)

Version *5.05.55* Registration Support 800-264-0644

- 5 Confirm your registration is correct and then tap **Submit**.

Registration Summary - 2506

Review your registration information then tap 'Submit'.

First Name: Last Name:

Email:

Security Question: Security Answer:

Mobile Number: (To be used for your ID verification)

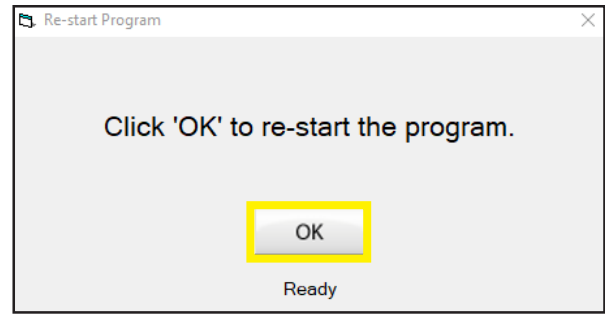
Device Name: Device ID:

Product Keys

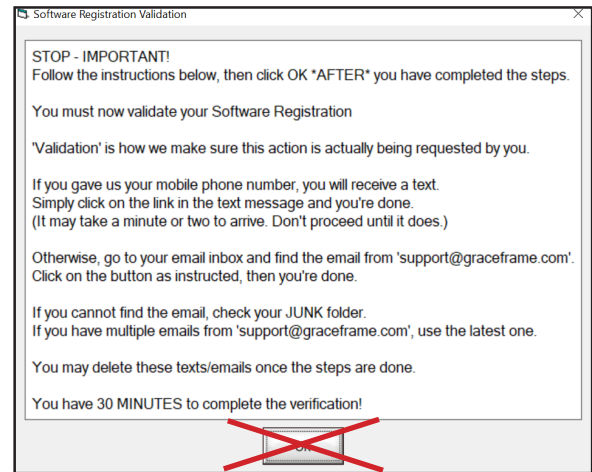
QMO	██████████	QCT	Quilter's Creative Touch

Activation Key:

- 6 A window will prompt you to restart the program. Press **OK**.

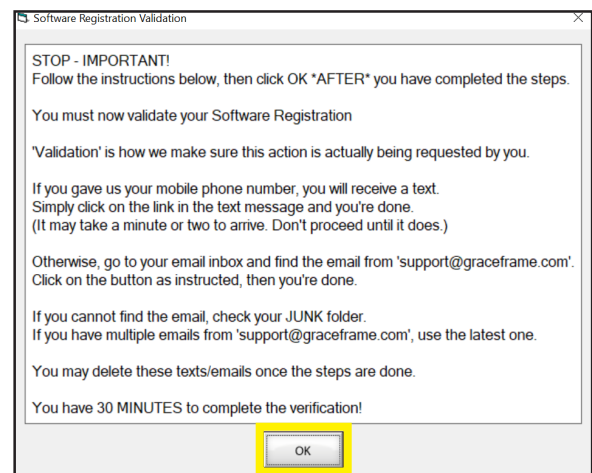


- 7 Do not click okay. A text message will be sent to your phone with a verification link. If you did not enter a mobile number, or do not receive a text, check your email. Don't forget to check your spam folder!

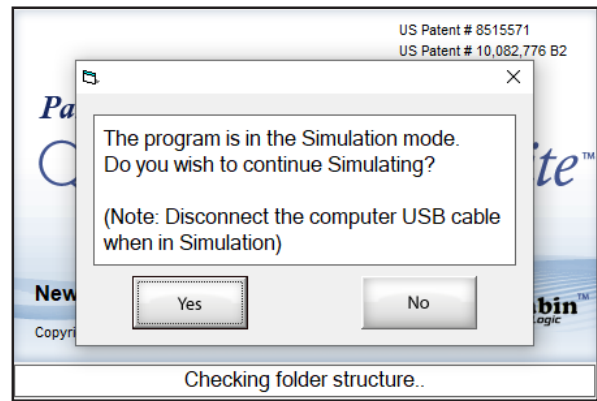


- 8 Click the verification link in your phone or email. A screen will display stating that the verification was successful.

- 9 Press "OK" back on this screen.



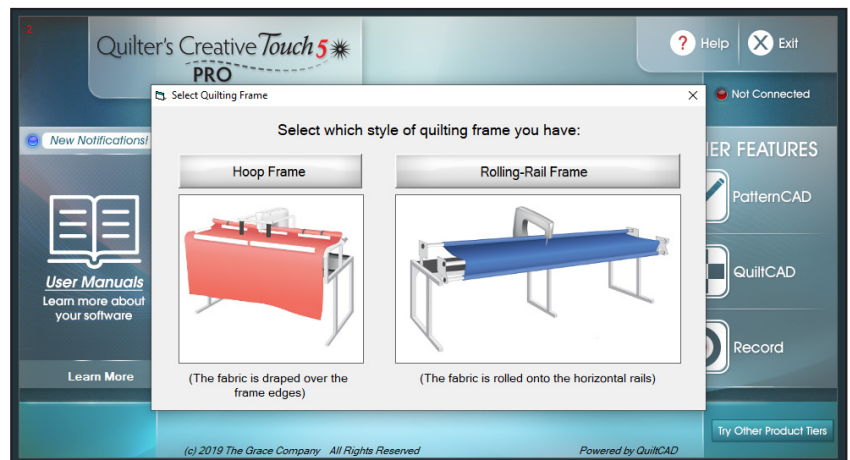
- 10 When the program boots back up, a popup will ask if you wish to continue Simulation Mode.



- 11 A loading screen will display briefly.



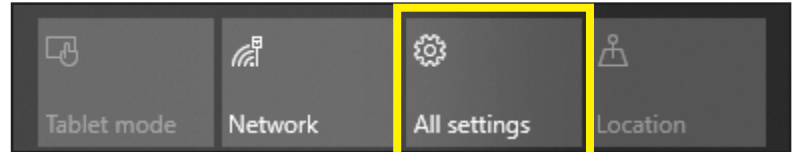
- 12 Choose which type of frame you will be using.



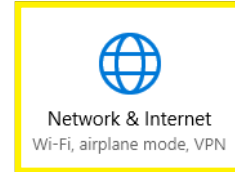
- 13 Registration is complete! When you are ready, close Quilter's Creative Touch, and plug your tablet into your quilting machine. Then re-open the software to begin quilting! Enjoy using Quilter's Creative Touch 5!

Connecting to the Internet

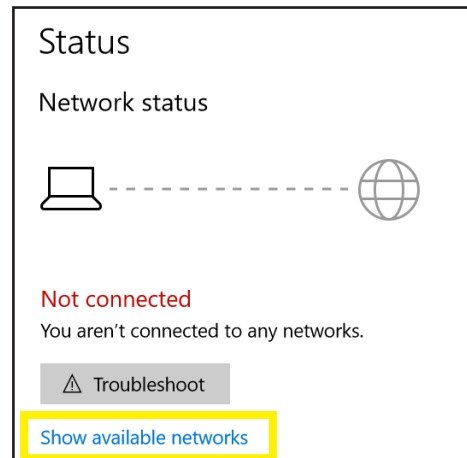
- To connect to the Internet, swipe in from the right on your tablet. Click on **All Settings**.



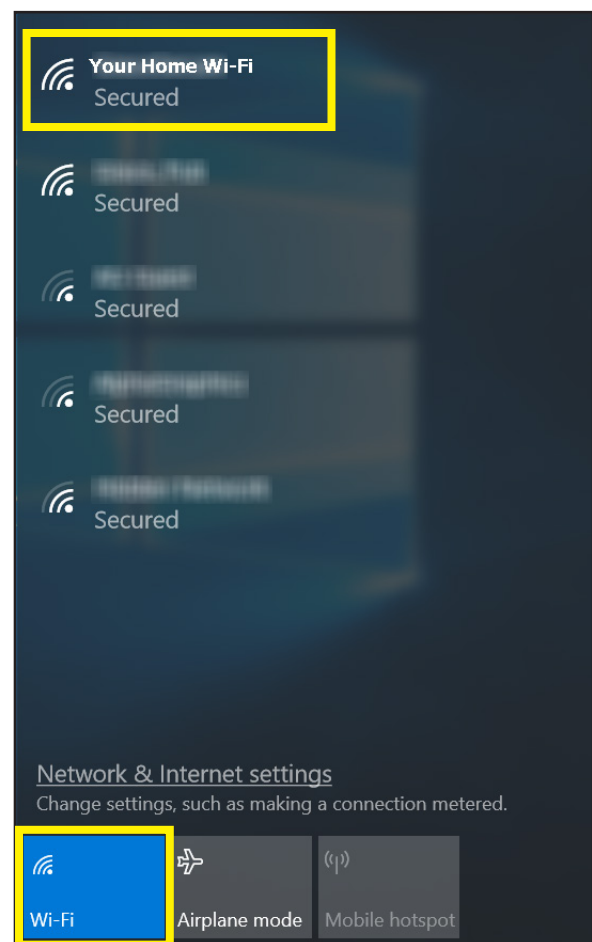
- Click on **Network & Internet**.



- Under Status, tap the link that says **Show available networks**.



The list of available Wi-Fi networks will show up. Locate your local Wi-Fi connection, select it. If you have never connected to this network it will prompt you for your Wi-Fi password. Enter in your password and click on **Connect**.



If your Wi-Fi button is greyed out, click on the button to enable the Wi-Fi. If your tablet has a dedicated button to enable Wi-Fi you must turn that on.